

The Azalea View

theazaleaview@yahoo.com

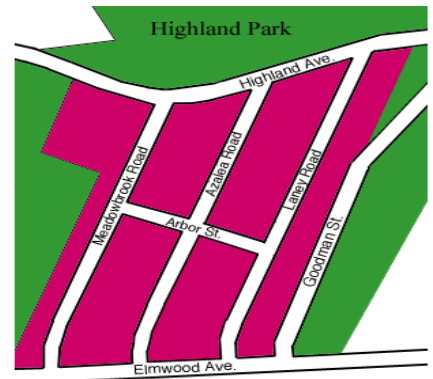
The ANA Quarterly Newsletter

Summer 2008

Circulation: 200...thanks in large part to Sue Bellinger!

Welcome to the Summer Azalea View !

The Azalea Neighborhood is a mix of owner occupants and renters of all ages and the ANA encourages all who live here to become active in our community. This is a community newsletter. If you have news items, ideas to contribute or simply questions about the neighborhood, give Sue O'Neil a call at 442-8586 or send an email to theazaleaview@yahoo.com The Azalea View is brought to you by the Azalea Neighborhood Association with support from the Neighbors Building Neighborhoods Sector 6.



Highland Park News

Big things are happening in our backyard!

If you've been by the **Lamberton Conservatory** lately you'd have noticed that the main glass house has been dismantled. It is being rebuilt to its original design but will meet today's safety standards. It should be completed by Thanksgiving.

Earlier this summer the **reservoir** was drained because there was a leak. The city has also announced a plan to install new disinfection equipment and a liner in an effort to comply with new federal drinking water regulations.

The **Drum Corps** Associates World Championships are in Rochester again this year August 29 – 31. As in years past, a couple of the teams will be practicing in Highland Park. You'll be able to hear world class drum corps music from your porch!

Mt. Hope Avenue Reconstruction Project

The City is in the process of redesigning Mt. Hope Avenue. The stretch between Elmwood Ave. and Crittenden Blvd. has the highest accident rate for any roadway segment in the county; it is 15 times the Monroe County average for similar principal arterial roadway segments. In addition, University of Rochester is planning to develop a "College Town" on the old Wegman's site. The project is expected to begin Spring 2010.

The city hosted a community design workshop at South Presbyterian Church on June 21. Several Azalea neighbors attended the workshop in which participants were asked to contribute ideas focusing on four topics: transportation, land use mix, public realm, and long term vision. Participants envisioned an urban-village setting which would be safe for pedestrians, bicyclists, and motorists. Many said they'd like lots of plantings and a small grocery store.

The city will present a design plan based on its findings at a community meeting on **Thursday, August 7 at 7:00pm, at South Presbyterian Church, 4 East Henrietta Road.**

We hope you'll attend.

First Annual Lilac-Azalea Neighborhood Garage Sale a SUCCESS!

The 1st annual combined neighborhood garage sale was held July 19th. Sixteen households in our neighborhood participated and were very successful in turning their "trash" into someone else's "treasure"! Thank you to Sue Bellinger, David Day and Lisa Martone for map and balloon distribution and Claudia Conley for organizing the event!

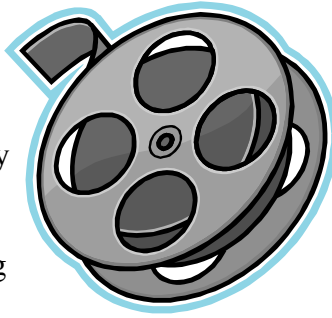


NEIGHBORHOOD ICE CREAM SOCIAL

The Azalea Neighborhood Association is hosting an Ice Cream Social on Thursday, August 21 at 7:00pm at the corner of Arbor and Laney. In case of rain, it will be held the following Thursday, August 28, same time and place.

Hooray for Hollywood!

If you haven't already been to the Highland Bowl to catch a movie this summer, don't worry, there are plenty left to see!



The County is showing the following films on Thursdays at dusk:

July 31 – *Bee Movie*

August 7 – *Horton Hears a Who*

August 14 – *Harry Potter & the Order of the Phoenix*

The Business Association of the South Wedge Area (BASWA) and the George Eastman House are putting on "Cinema at Sunset" from August 26 through August 30. Movies start at 7:30pm. Screenings will move to the Dryden Theater in case of rain.

August 26 – *2001: A Space Odyssey*

August 27 – *Manhattan*

August 28 – *North by Northwest*

August 29 – *American Graffiti*

August 30 – *Bride of Frankenstein & The Black Cat*

Upcoming Events

Thursday August 7 – *Mt. Hope Community Design Workshop*, South Presbyterian Church, 4 East Henrietta Rd. 7:00pm

Friday August 8 – Sunday August 10 – *Rochester Omnium Bike Races*

Thursday August 21 – *Ice Cream Social*, corner of Arbor and Laney, 7:00 pm
Rain Date August 28

Tuesday August 26 – Saturday August 30
Cinema at Sunset, Highland Bowl

Ongoing

Mt. Hope Cemetery tours Saturdays and Sundays www.fomh.org

NBN6 meeting, second Monday of the month at 5:30pm. Monroe County Parks Building, 171 Reservoir Ave. www.nbnsector6.org



Do you know of a new neighbor? If so, please give Claudia Conley a call at 319-3649 to let her know.

Lost Your View?

The Azalea View is being archived at <http://www.nbnsector6.org> Click on Azalea Neighbors and you can download this and past editions. You can also receive the newsletter electronically by sending your e-mail address to theazaleaview@yahoo.com.

International Bicycle Race Rolls Through Our Neighborhood

Question: Where's the optimum place to watch the Rochester Omnium bicycle race?

Answer: HERE!



The city of Rochester is once again hosting the Rochester Omnium bicycle race August 8-10, and this time it's going through our neighborhood!

On **Sunday August 10**, the final leg of the last race consists of two laps that will go down South Goodman and turn west on Elmwood Avenue, heading back to Genesee Valley Park.

This means that South Goodman St and Elmwood Ave will be closed to traffic between 2:30 and 4pm.

For more information visit www.rochestercrit.com

theazaleaview@yahoo.com